



BRA-IN Webportal

Databased decisions, good for your costs and the environment

When your equipment is connected via a BRA-IN branded product, you can access valuable data, helping you to monitor and optimize your waste handling.

Especially if you have many types of equipment and operate on multiple sites the BRA-IN Webportal gives you the overview needed to make fast and effective decisions.

Please note that access is conditioned on an active SIM card subscription.

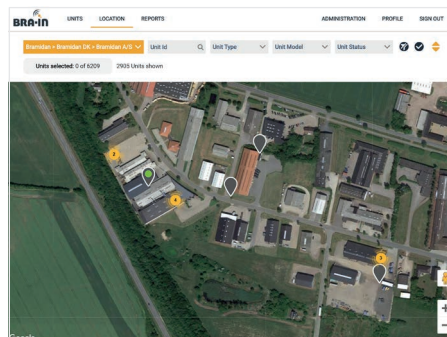
Highlights

- Status of machines – for optimized service, allowing quick and remote service.
- Location of equipment – viewable on map based on Google coordinates.
- Real-time fill levels – for route optimization of waste collections.
- Access to production data – directly on screen or via basic report features.
- Easy exports of lists to excel for analysis.
- Show BRA-IN compatible equipment regardless of type.
- Add machines with no modem for full asset overview.

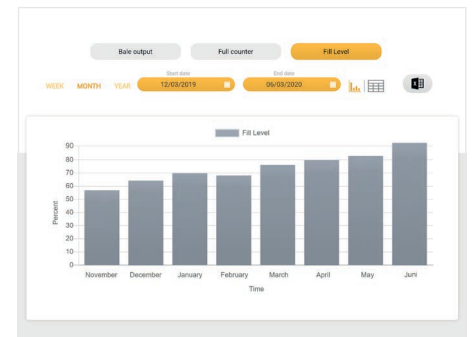
Details

Connection Status	Unit Status	Fill Level	Unit Model	Total Running Hours
<input checked="" type="checkbox"/>		110%	HDS 20m3	270
<input checked="" type="checkbox"/>		100%	SPN Screw	50
<input checked="" type="checkbox"/>		100%	SPN Screw	289
<input checked="" type="checkbox"/>		9/10	B3	3
<input checked="" type="checkbox"/>		65%	HDS 18m3	28
<input checked="" type="checkbox"/>		55%	HDS 18m3	57
<input checked="" type="checkbox"/>		85%	PVR 20m3	421
<input checked="" type="checkbox"/>		68%	HDS 18m3	637
<input checked="" type="checkbox"/>		8/10	B30	10
<input checked="" type="checkbox"/>		4/10	X25	141
<input checked="" type="checkbox"/>		45%	HDS 18m3 F	90
<input checked="" type="checkbox"/>		40%	HDS 18m3	586
<input checked="" type="checkbox"/>		100%	HDS 20m3	540
<input checked="" type="checkbox"/>		2/10	B20	90
<input checked="" type="checkbox"/>		55%	HDS 18m3	477
<input checked="" type="checkbox"/>			HDS 18m3 F	39
<input checked="" type="checkbox"/>			X25	81

List View of your equipment with various data rows of customer and production data.



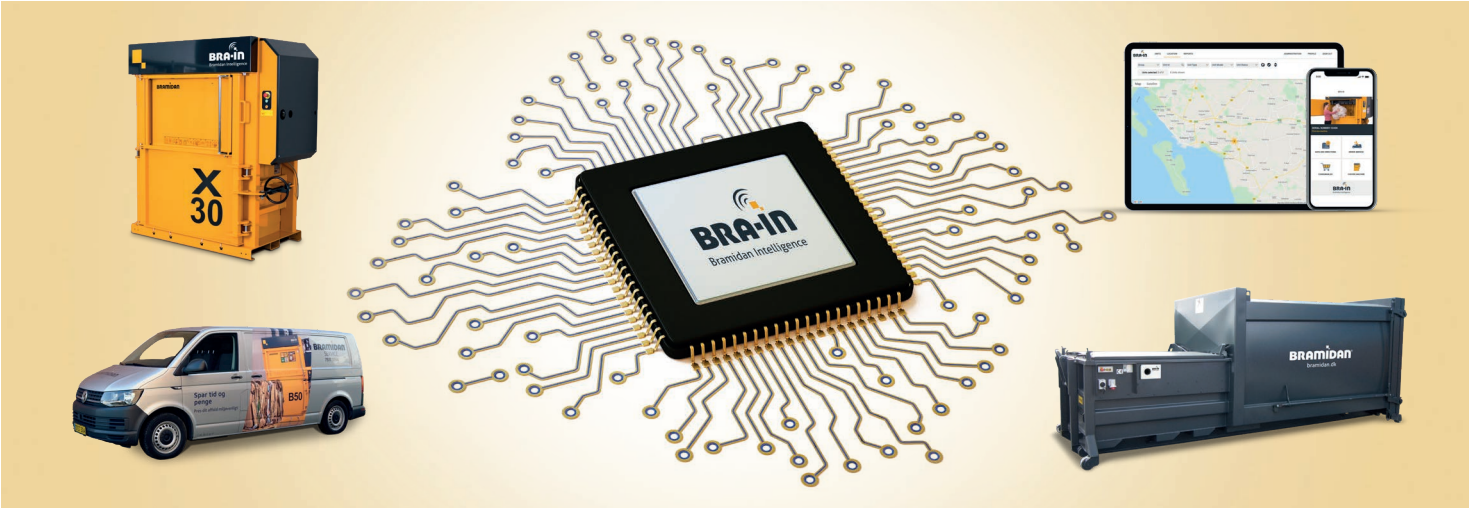
Map View of your equipment based on typed coordinates or actual GPS location.



Production data for one or multiple machines, in list or chart view.

BRA-IN Webportal

Monitor your solutions in one place



What is BRA-IN, Bramidan Intelligence?

In our business BRA-IN is short for Bramidan Intelligence, and a collective name for our special developed IOT system. This links all connected compaction equipment with IT systems, providing you with a 360 degree view of your equipment minimizing direct and indirect waste handling costs over time.



Previously our employees used quite a lot of time on assessing the load capacity of the compactors before the weekend, now we know the fill level before emptying them – which can be observed directly on the BRA-IN Webportal. We have saved more than 15% since we implemented the new technology from Bramidan. Both our older equipment that have been updated, and the new machines we have acquired is a significant efficiency increase. A small but important step that ensures our users the best possibilities for effective recycling here in the municipality".

Henrik, Team Leader / Affald Genbrug Vejle



Challenges

- Manual assessments of fill level before the weekend.
- Wasted time on continuous checks.
- Too much transport of empty space.
- Strong desire for less environmental impact.



Chosen solution

- Access to real-time fill level via the BRA-IN Webportal.
- Email notifications at desired fill level.



Benefits

- Data-based fill level reports means 15% less transport.
- Significant less time consumption towards the weekend.
- Environmental impact reduced by up to 15%.



bramidan.ie